

HEDWIN

Quality.
Reliability.
Versatility.



**Taps, Faucets, Dispensing Systems
Products and Quality You Can Rely On.**

Hedwin Corporation 1600 Roland Heights Avenue Baltimore, MD 21211

800-638-1012 • 410-467-8209 • Fax 410-889-5189

HEDWIN

An Employee-Owned Company



(1) *Tube Dispenser Kit – 3/8" Gum Rubber Tubing (COM1050) 3/8" Latex Rubber (COM1058).* Kit has a flexible tube fitted to an adaptor & 38mm screw cap. Plastic medi-clamp valve provides shut-off and flow control. Comes individually packed.

(2) *Quick Serve Tap with 3/4" Threaded Adaptor (COM4444)* For applications with a 3/4" female threaded opening. Polypropylene molded tap, low density polyethylene molded threaded adaptor with rubber gasket.

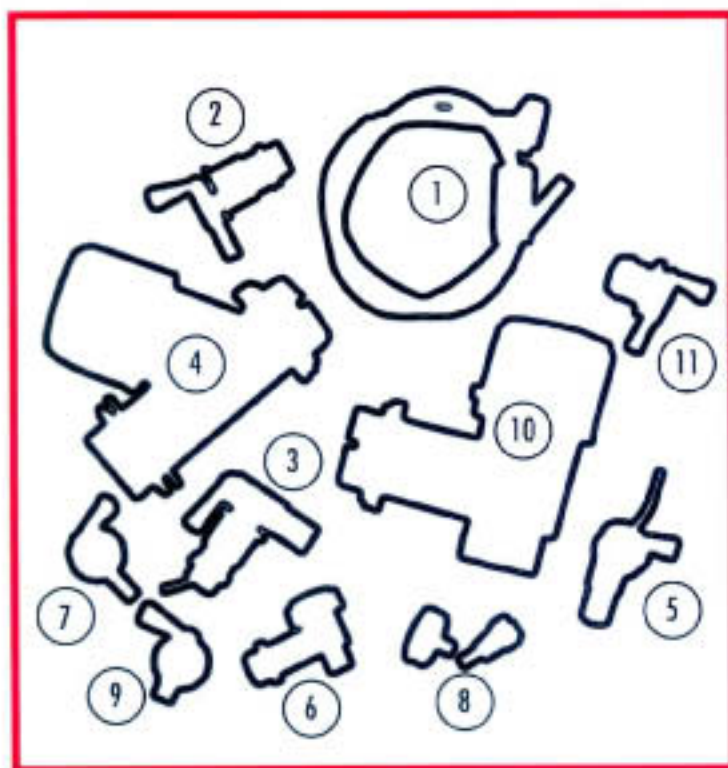
(3) *Aeroflow Tap with 3/4" Adaptor (COM4408)* For applications with a 3/4" threaded adaptor. LDPE body molding, LDPE curved tube for venting, red polypropylene molded tap with insert for venting while dispensing, and HDPE molded threaded adaptor with a rubber gasket fitted into place.

(4) *2" Straight Through Drum Major Tap (COM4417)* For use with 2" NPSM drum opening. Injection molded of high density polyethylene, with on-off screw valve. Tap has a retaining ring and nitrile rubber washer. Exit port is in line with entry port. NPSM Gland (COM4491) and Cutter Adaptor (COM4439) also available.

(5) *Aeroflow Tap with 38mm Plastic Screw Ring (COM4406)* Aeroflow Tap with a 38mm plastic screw ring and gasket. Tap has "air return" feature that allows air back into container to dispense product without interruption.

(6) *3/4" Drum Tap (COM4411)* With 3/4" thread. Injection molded of HDPE. Valve is screw operated plug type. Unit has FDA approved rubber gasket in place. Can be screwed into a 3/4" NPSM female threaded opening. Nylon version available (COM4412).

(7) *38mm Quick Serve Tap (COM4401)* Low density polyethylene body molding, polypropylene molded tap and screw cap. Also: Quick Serve Tap and Mini-Bag (COM1428). Individual faucet bagged for cleanliness.



(8) *Colder Quick Connect Body – 1/4" I.D. (COM6837) 3/8" I.D. (COM6836)* Fast no spill connection with one hand coupling mechanism. Exit fitting for either 1/4" or 3/8" I.D. flexible tubing. Use with 38mm Puncture Seal Screw Cap (COM6835).

(9) *12mm Quick Serve Tap with 38mm Screw Ring (COM4448)* A variation of the standard Quick Serve Tap with low density polyethylene body, polypropylene molded tap with 12mm spout, screw ring, and gasket.

(10) *2" Drum Major Tap (COM4420)* For use with 2" NPSM drum opening. Injection molded of high density polyethylene, with on-off screw operated valve. NPSM Gland (COM4491) and Cutter Adaptor (COM4439) also available.

(11) *Quick Serve Tap, Plug Fit (COM4402)* Plug fit style faucet with low density polyethylene body molding and polypropylene molded tap.

Hedwin Corporation 1600 Roland Heights Avenue Baltimore, MD 21211

800-638-1012 • 410-467-8209 • Fax 410-889-5189